

Information about the area SEND inspection of your local area: for children and young people



**Easy
Read**

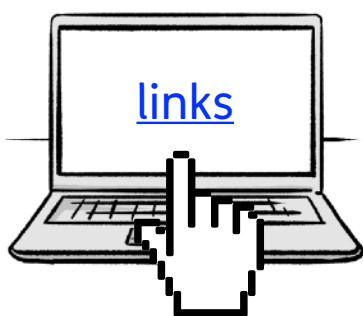


Contents

Introduction.....	3
Why do we look at services?	5
How can you share what you think?	6
What happens next?.....	8
More information	10



In this Easy Read document, hard words are in **bold**. We explain what these words mean in the sentence after we have used them.



Some words are [blue and underlined](#).

These are links that will go to another website which has more information.

Introduction



This information is from **Ofsted**.

Ofsted looks at nurseries, schools and colleges to make sure that children and young people are taught as well as possible. We also look at children's social care.



We also work with the **Care Quality Commission (CQC)**.

CQC checks the quality of health and social care services in England, like hospitals and care homes.

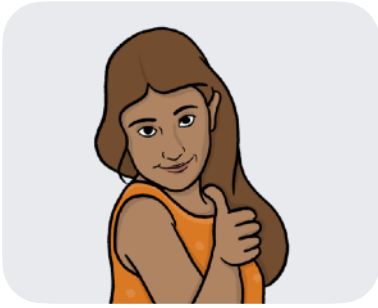


Together we look at services in local areas that support children and young people with **SEND**.

This is called an area SEND inspection.



SEND stands for **S**pecial **E**ducational **N**eeds and **D**isabilities. Children and young people with SEND aged 0 to 25 need some extra support to learn and grow.



We want to make sure local services are supporting children and young people with SEND to learn and grow.



This information will tell you what happens when we look at services in local areas.

Why do we look at services?



We look at different kinds of services that support children and young people with SEND. These include:



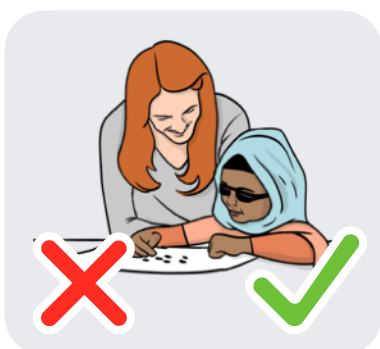
- Education services, like schools.



- Health services.



- Care services.



We do this so that we can see what is working well and what needs to be better.

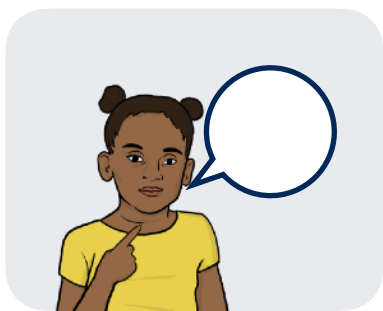
This will help make services better.

How can you share what you think?



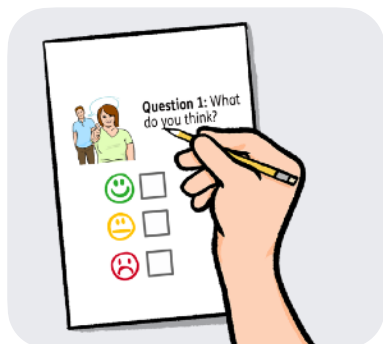
Inspectors from Ofsted and CQC will visit your local area.

Inspectors are people who will do the inspection.



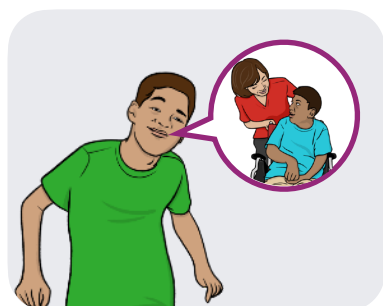
You can tell inspectors what it is like being a child or young person with SEND in your local area.

You can do this by:

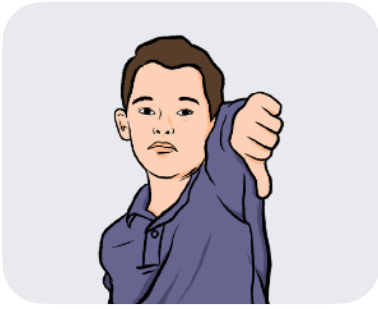


- Answering some questions in our online survey about the help and support you get.

You can tell us what is working well and what could be better.



- Taking part in meetings with us and telling us about the kind of help and support you get.



You can say no if you do not want to be involved, or do not want to speak to us.

What happens next?



After looking at services for children and young people with SEND in your local area, we will write a report.

The report will say:



- What services are doing well.



- What needs to be better.



If we think services in your local area are not doing enough to support children and young people with SEND, we will:



- Ask them to write a plan about what they are going to do better.



We won't write anything in our inspection report that tells people who you are.



We will also visit your local area again to check that services are working better.

More information



If you say something that makes us worry about your safety, we will tell your local council and health services.



If you are under 18 and need some advice, you can call Childline on 0800 1111.



If you are 18 or older and need some advice, you can call the National Society for the Prevention of Cruelty to Children (NSPCC) on 0808 800 5000.